

Modular and moulded-case circuit breakers

90 RESTART

In the event that the automatic circuit breaker trips, the ReSTART devices restore the power supply quickly, but only after checking the system status. In addition, the Autotest function periodically tests the functioning of the residual current circuit breaker protection without disconnecting the system from the power supply. The range includes 2-pole and 4-pole versions (also PRO and TOP for professional applications).



ReSTART
AUTOTEST



90 RCD

The 90 RCD range includes the MDC monobloc compact residual current c.b. with overcurrent protection, the BD and BDHP add-on modular residual current devices for MT and MTHP miniature circuit breakers, and the SD residual current circuit breakers.



90 AM

The 90 AM range consists of auxiliaries for circuit breakers and many modular accessories for protection, command, programming, measurement and signalling in electric systems.





90 MCB

The 90 MCB modular circuit protection devices offer a wide range of models to meet any overcurrent or short-circuiting protection requirement in all domestic, industrial and commercial applications. The range includes compact MTC, conventional MT and high performance MTHP miniature circuit breakers.



90 PV

The 90 PV range is able to satisfy the most varying photovoltaic plant engineering requirements, from the residential context to the commercial/industrial sector. The range offers pre-wired string boards and specific modular products in DC.



MTX AND 97 MSS

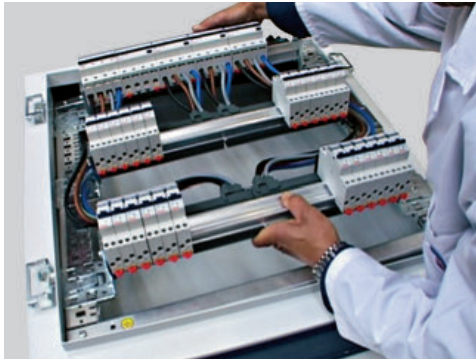
The MTX and 97 MSS ranges are the ideal solution for the protection, control and isolation of advanced industrial and commercial systems. They are robust, reliable and offer considerable capacity in terms of breaking capacity. They can be integrated with the boards of the 47 CVX range.



Distribution boards and enclosures

47 CVX 160 E

Monobloc surface-mounting boards up to 160A, with an extractable frame and an IP30-40-55-65 degree of protection. Thanks to the extractable frame and quick connection of brackets, rails and functional profiles, very quick assembly is possible.



47 CVX 160 I

Flush-mounting board up to 160A, with an extractable frame and an IP30-40 degree of protection.

The particularly refined design and limited overall dimensions make the CVX 160I boards suitable for advanced commercial environments.



47 BUSBAR

Quick dividers for modular and moulded-case circuit-breakers up to 400A. Distribution systems up to 1600A with shaped and flat busbars.